

Applicant Information Sheet

Ranger (Caretaker) (0.4 FTE)

Vacancy number:	400/08284
Employment type:	Fixed Term
Location:	Godley Head
Group:	Regional Operations
Salary:	\$58,816 to \$66,578 per annum (pro-rated to 0.4 FTE will be \$23,526-\$26,631 per annum)

Te Kaupapa a Te Papa Atawhai – Papatūānuku Thrives

Toitū te marae a Tāne, toitū te marae a Tangaroa, toitū te tangata
If the land is well and the sea is well, the people will thrive.

Te Kaupapa a Te Papa Atawhai (*Department of Conservation*) puts nature and people at the heart of everything we do. They are connected through our single, united purpose: Papatūānuku Thrives.

In te ao Māori, Papatūānuku is the earth mother who creates and nourishes all life. Her realm includes the lands and waters and the life that flourishes within them. She is the land, sea, sky, ocean, freshwater, plants, animals and us.

Te reo Māori and te ao Māori are the anchor of Te Kaupapa, the purpose and strategy of Te Papa Atawhai (Department of Conservation). This recognises that Te Tiriti o Waitangi and the relationship with whānau, hapū and iwi, are central to all that we do.

Te Kaupapa reminds us of who we are, what we do and why we do it.

Papatūānuku Thrives

OUR ROLES

- Partner with iwi, hapū and whānau, and collaborate with others
- Care for the land, the waters, our native species and our heritage
- Advocate for nature, and be a regulator
- Foster recreation in nature
- Tell the stories of our nature and our history

OUR BEHAVIOURS

- Whakatinanatia | We deliver
- Atawhaitia a Papatūānuku | We love nature
- Whakawhānauangātanga | We build relationships
- Whakaaauaha | We innovate



OUR OUTCOMES

- Te ora o Papatūānuku | Healthy nature
- Te ora o te Hapori | Thriving communities
- Te hunga Atawhai | People who care

OUR PRINCIPLES

Within our operating model, our decision-making principles are:

- Elevating principles of the Treaty and fulfilling our Treaty Partner relationships
- Holding wellbeing and safety at our heart
- Working together with others
- Leaving the world a better place

TE PAPA ATAWHAI | DEPARTMENT OF CONSERVATION

TE PAPA ATAWHAI | DEPARTMENT OF CONSERVATION

• Whakawhānauangātanga | We build relationships

• Te ora o te Hapori | Thriving communities



Context

Awaroa/Godley is a WW2 coastal defence heritage site with a campground, lighthouse cottage (bookable accommodation) and popular loop coastal walk within a 30minute drive from Christchurch. The facilities were shut in 2021 due to Asbestos. In the past 18months, the staff quarters (Caretakers Cottage) have been upgraded and asbestos remediation works have been taking place. The site will re-open to the public in July, and the accommodation (Lightkeepers cottage and campground) will reopen for bookings once the Caretaker role has been filled.

About the Role

The Caretaker role is currently 16 hours per week, fixed term for 2 years. The reason it is fixed term is to allow us to assess the workload and gain a post-covid understanding of potential revenue generation figures. After this 2-year period, we will gain an updated understanding of the role requirements, make changes to the role hours if required and then recruit permanently.

In this role you will:

- Lock the gate at 8pm Thurs, Fri & Sat and unlock at 7am the following mornings.
- Work alone and/or as part of a team to maintain visitor assets (e.g. mow, cut tracks, control weeds, clean toilets/accommodation) and protect heritage assets (remove graffiti, support with heritage improvement projects).
- Be the public face of Awaroa/Godley Head. Make visitors feel welcome, manage ad-hoc visitor enquiries, and check campers have paid their fees. This work will predominately occur on Saturdays, Sundays and Public holidays.
- Create and maintain positive working relationships with district Recreation/Historic Rangers and communicate issues as they arise back to the team.
- Keep an eye out for vandals and call the police & DOC if required (although we believe having a presence on site will be deterrent, so we do not expect this to occur much).

Caretakers Cottage

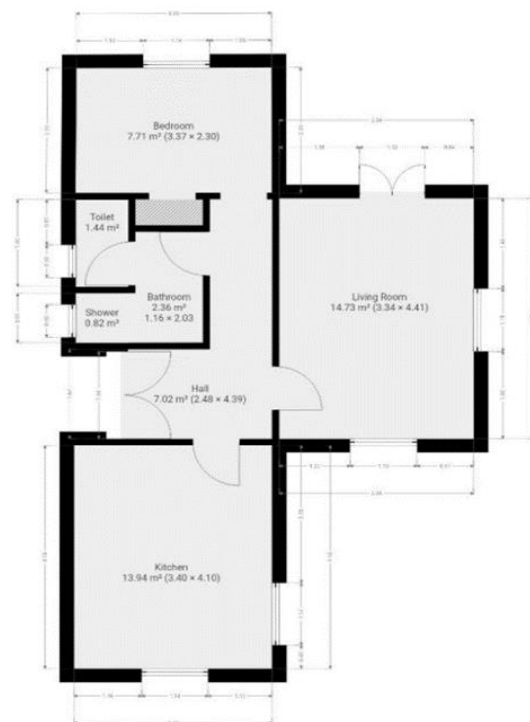
This is the Historic Medical Inspection building that has been converted into a comfortable one bedroom cottage. It is undergoing renovation (paint, new carpet ect) and will be kitted out with new furnishings.

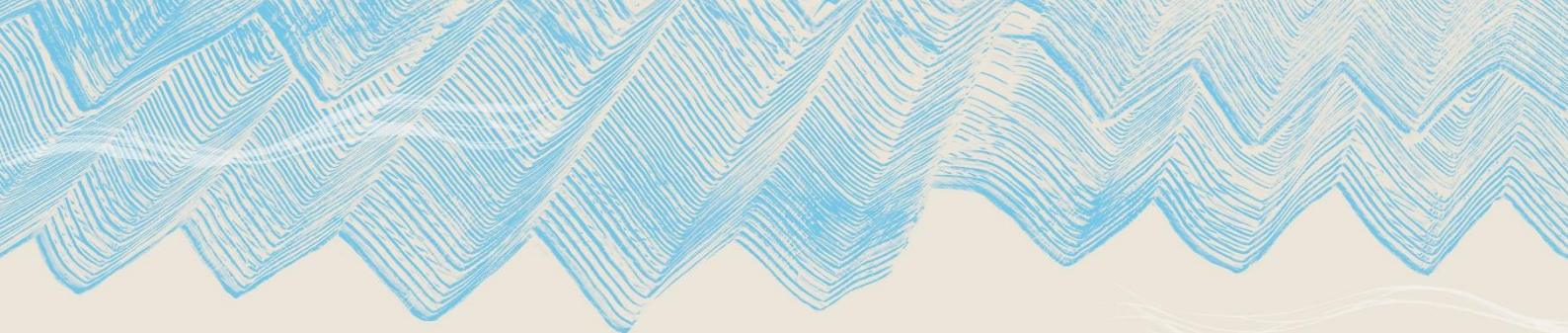
- Fully furnished
- Small fenced section with space for your private vege garden
- If you have a partner, they can live on-site with you
- Pets are not allowed
- Arguably the best views in Christchurch
- Rent is at reasonable market rates



Images (clockwise from top):

1. Caretakers Cottage,
2. floorplan,
3. garden area after 2 years of neglect (will look a bit different in a months' time),
4. Abby with the view from the living room towards Taylors Mistake (note adjoined private deck),
5. Steve posing with the yet-to-be painted doorway & a rubbish bag :P





Godley Head Site



Caretakers Cottage





Pre-Employment Background Checks

Should you be the successful applicant for a position, you may be required to undertake a range of pre-employment background checks. The level of background checks required will depend on the level and type of position you are appointed to. *These could include one or more of the following:*

- Reference checks
- Qualification check
- Credit history
- Pre-employment drug testing
- Criminal conviction history
- Safety Check
- Police vetting
- Security clearance
- Children's Worker Safety Check

Prior to employment you will also be asked to read and agree to comply with the Use of DOC Technology Standard Operating Procedure (SOP) and read a copy of the Standards of Integrity and Conduct, which sets out the behaviour expected of everyone who wants to work for the Department.